

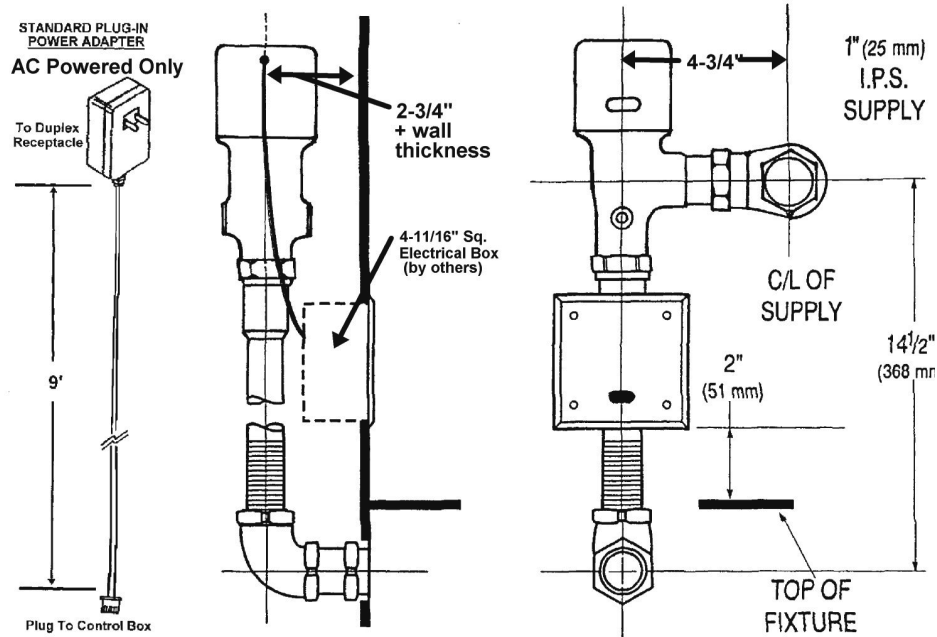


ISO 9001 Certified

# H8-D1B-05/HB8-D1B-05

0.5 GPF

Concealed Urinal / 3/4" Back Spud



## Description

Sensor operated, water conserving, concealed water closet flush valve for floor mounted or wall hung fixture (back spud).

- H8-D1B-05 (AC Powered)
- HB8-D1B-05 (Battery Powered)

## Flush Cycle

- 0.5 GPF
- Field adjustable for water conservation

## General Specifications

Slow-closing, non-diaphragm, piston operated urinal flush valve in a rough brass finish with the following features:

- Self-cleaning filtering system
- Piston seals are unaffected by chlorine, chloramines, and ammonia
- Override push button
- 3/4" I.P.S. angle stop valve
- Stainless steel 7" X 7" wall plate with vandal resistant screws (for 4 11/16" sq. electrical box, provided by others)
- Self-diagnostic electronics system with manual reset
- Superior piston flushing mechanism
- Operating pressures: 10-125 PSI
- 36 hour sentinel flush
- 3 second arming delay
- Adjustable tailpiece
- Vacuum breaker / flush tube and spud coupling for 3/4" concealed back spud
- Sweat solder kit
- Standard with electronic and true mechanical override

## Electrical Specifications

- Control Circuit:
  - Solid State
  - Input: 12 VDC (AC), 6 VDC (Battery)
  - Output: 6 VDC
  - 3 second arming delay
  - 36 hour sentinel flush
- Sensor Range: Up to 36"
- Solenoid:
  - 6V DC 50/60 Hz
  - Latching type
  - Slow closing
  - Piston operated
- Power Source (H8-D1B-05 only):
  - Plug-In Adapter (standard)
    - Input: 120V AC, 60 Hz, 25 W
    - Output: 12V DC, 800 mA
    - Class II, UL Listed
  - HC-010 / HC-0104 Multi-Unit Adapter (optional)
    - Input: 120V AC, 60 Hz, 60 W
    - Output: 12V DC 3A
    - Class II, UL Listed
    - Powers up to (4) flush valves (HC-0104) or (8) flush valves (HC-010)
- Batteries (HB8-D1B-05 only):
  - (4) AA Alkaline with Battery Holder

## HYDROTEK INTERNATIONAL, INC.

5055 Forsyth Commerce Rd., Ste 124  
Orlando, FL 32807  
800.922.9883 (Phone)  
866.670.5580 (Fax)  
www.hydrotekintl.com

